

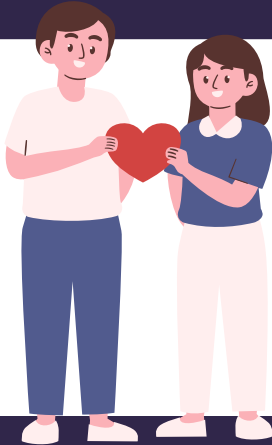
book



## MAYFLY ADVANCE CARE PLANNING

Increase confidence and skills in supporting people with expressing their priorities & wishes and making plans for future care.

Dates TBC, 0900-1630  
In person @ Pendleside Hospice



## DISCOVER THE HOSPICE

Come along to this session to explore our Hospice services, meet the team and take a tour.

11 March, 17 June, 4 Nov, 0915-1215  
In person @ Pendleside Hospice



book



## CARE HOME CHAMPIONS

This 2 day course for care home and domiciliary care staff, will cover key elements of end of life care. You will be required to complete various activities in your place of work alongside classroom teaching.

Various dates, 0900-1600, 2 days, register your interest  
In person @ Pendleside Hospice



## END OF LIFE CARE CONFERENCE

Join us for our annual conference focusing on 'Hands-on Essentials of End of Life Care'. Booking will open in April 2026, watch this space.

14 July, 0930-1600, save the date!  
In person @ Burnley College

book